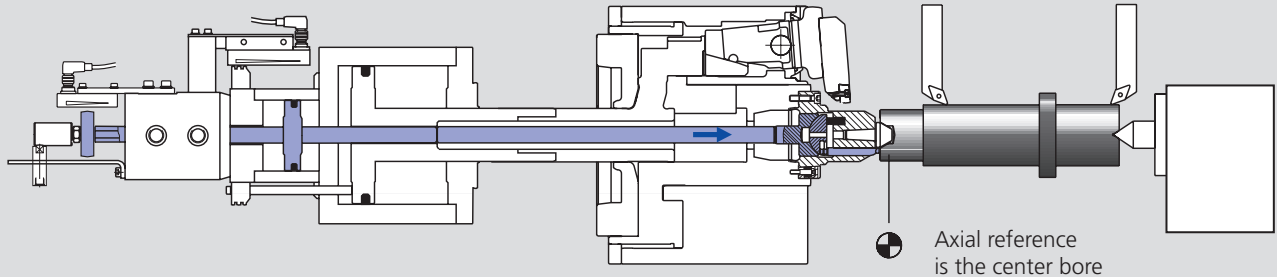


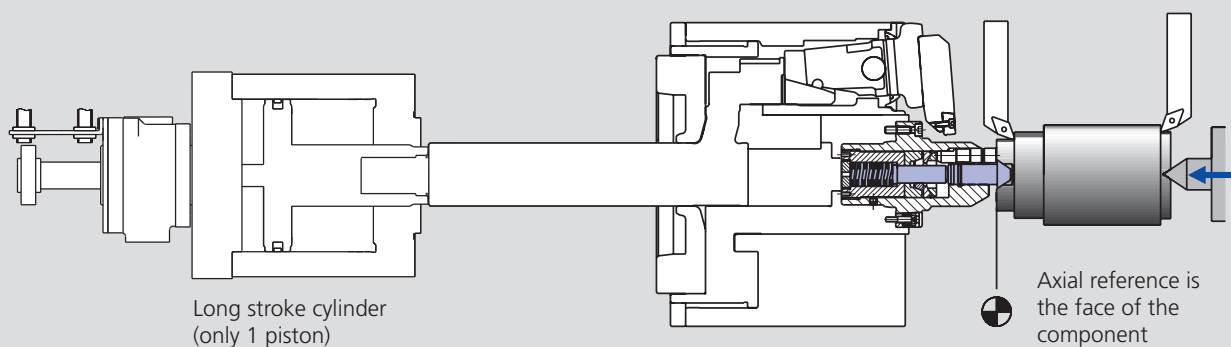
Shaft chuck with face driver with fixed center ZHVD-SZ or DCN double piston cylinder



Power operated face driver with fixed center type SNF (The design of the face driver is made according to the component)

- The axial reference is the center bore of the component.
- Fixed center guarantees highest concentricity.
- The driving pins are actuated via piston No. 2 of the double piston cylinder ZHVD-SZ. The driving pins penetrate into the face of the component (Piston No. 1 is used for chuck actuation).
- Clamped/unclamped position of the face driver is monitored by proximity switches/LPS.
- Highest accuracy - no adjustment necessary!

Shaft chuck with face driver with spring-loaded center SIN-L long stroke cylinder



Face driver with spring-loaded center type FSB (The design of the face driver is made according to the component)

- The axial reference is the face of the component.
- The component is pushed against the driving pins and the spring-loaded center by the tailstock thrust. The driving pins penetrate into the face of the component.
- A special built-in locking mechanism holds the spring-loaded center and holds the component in its axial position.
- Highest accuracy – no adjustment necessary!

Low maintenance - low wear by oil bath lubrication

Oil to be changed annually
Regular oil level check

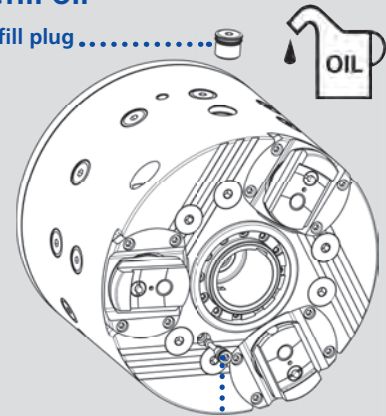
proofline® series
fully sealed-low maintenance

Oil: CGLP ISO VG 68

Chuck size	W-215	W-260	W-325	W-460
Oil quantity horizontal mounting	0.25 liters	0.50 liters	1.00 liters	1.50 liters
Oil quantity vertical mounting	0.50 liters	1.00 liters	1.70 liters	3.00 liters

Refill oil

oil fill plug



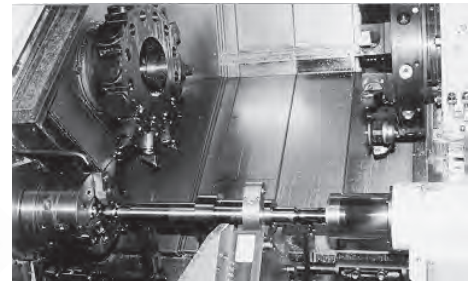
oil level control plug:

Applications

Shaft

Turning operation of: Milling operation of:

- Concentric dia.
- Faces
- Outlines
- Lubrication channels
- Slots
- Serration
- Outlines



Crankshaft

Turning operation of: Milling operation of:

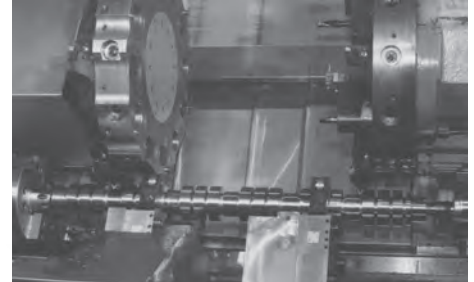
- Bearing dia.
- Crank sides
- Crank O.D.
- Cranks
- Reference slots
- Serration
- Lubrication channels

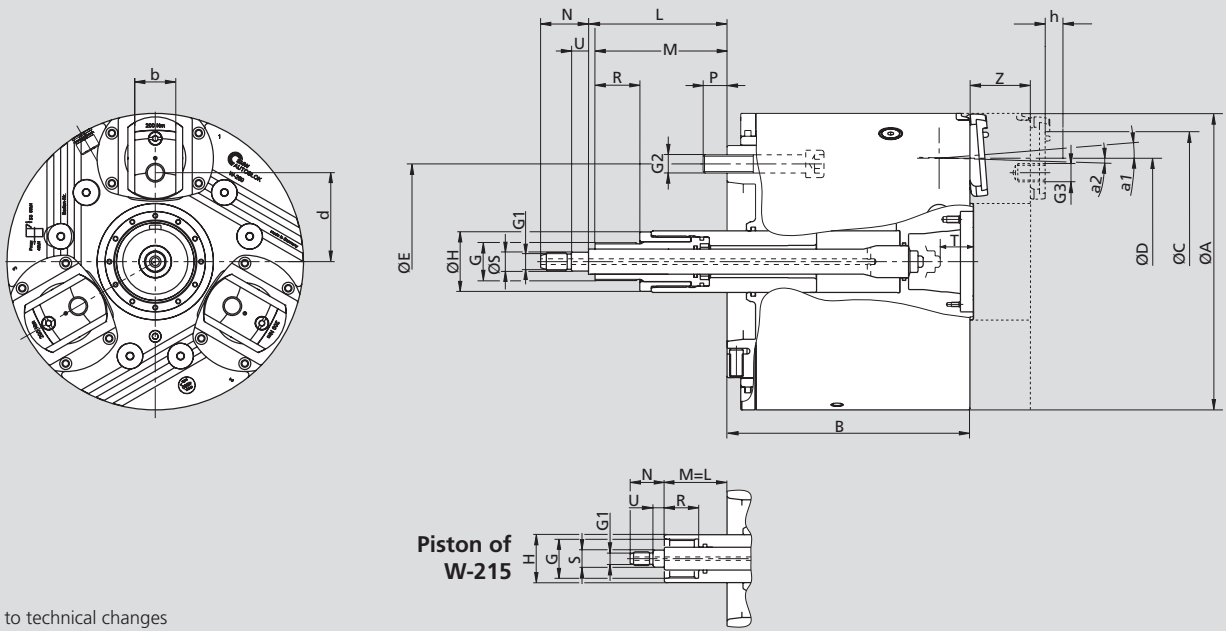


Camshaft

Turning operation of: Milling operation of:

- Bearing dia.
- Cam faces
- Cam profile
- Slots
- Serration
- Lubrication channels





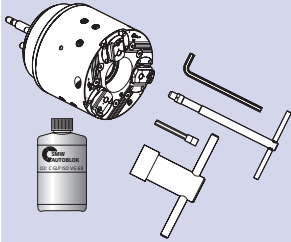
Subject to technical changes
For more detailed information please ask for customer drawing

SMW-AUTOBLOK Type		W-215		W-260		W-325		W-460	
Mounting		A06		A06	A08	A08	A11	A11	A15
Chuck outside dia.	A	215		260		325		460	
Chuck height	B	176		238	213	285	251	344	309
In clamping position (Radius)	C	R92		R115		R143		R205	
Max. clamping dia.	D	145		175		220		335	
	E	133.4		133.4	171.4	171.4	235	235	330.2
	G	M34 x 1.5		M33 x 1.5		M45 x 1.5		M85 x 2	
	G1	M12		M16		M16		M56 x 2	
	G2	M12		M12	M16	M16	M20	M20	M24
	G3	M12 x 20		M16 x 24		M20 x 30		M24 x 45	
	H	42		54		70		110	
Push rod face driver	min.max.	L	55/40	96.5/51.5	121.5/106.5	106/91	140/125	119/104	154/139
	min.max.	M	55/-4	96.5/26.5	121.5/51.5	106/26.8	140/60.8	119/24.4	154/56.5
	N	30		42		42		42	
	P	15.5		18	21	24	26	26	34
	R	30		45		50		50	
	S₁₆	15		16.5		16.5		56.5	
Push rod pos. check dimension	T	22		29		46		60	
	U	10		15		15		15	
Axial movement/jaw carrier	Z	44		53		58		65	
Piston stroke for jaw clamping	Z1	15		17		22		32.5	
Opening/residual stroke angle	a1/a2	4.5°/1.5°		4.5°/1.3°		4.5°/1.3°		5°/2°	
Opening/residual stroke at distance h*	mm	4.0/1.3		4.5/1.3		5.7/1.9			
Max. jaw stroke at distance h*	mm	5.3		5.8		7.6			
	b	30		36		44		52	
	d	65		78		96.5		150.5	
Residual jaw height	h	18		17		22		28	
Oil volume horizontal use	litres	0.25		0.50		0.75		1.50	
Oil volume vertical use	litres	0.50		1.00		1.50		3.00	
Max. speed	r.p.m.	5000		4000		3200		1800	
Max. draw pull	kN	30		55		75		100	
Max. grip force at reference distance h*	kN	60		110		150		200	
Moment of inertia	kg·m²	0.236		0.639	0.606	1.872	1.734	9.35	8.91
Weight (without top jaws)	kg	40		75	70	140	127	364	336

*When exceeding distance h gripping force/speed must be reduced accordingly

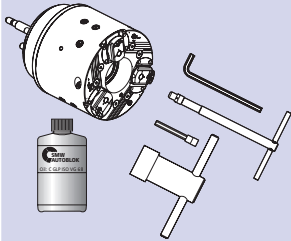


Supply range: Compensating clamping chuck with mounting bolts and mounting keys, oil



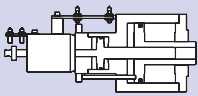
Spindle mounting \ Type	W-215	W-260	W-325	W-460
A6	068616	069527		
A8	069810	069444	069525	
A11		069815	068981	069602
A15				069600

Supply range: Self centering clamping chuck with mounting bolts and mounting keys, oil



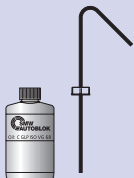
Spindle mounting \ Type	W-215	W-260	W-325	W-460
A6	069540	069542		
A8	069812	069546	069552	
A11		069817	069554	069606
A15				069604

Actuating cylinder



Double piston cylinder \ Type	W-215	W-260	W-325	W-460
ZHVD-SZ	68-17	110-25	110-25/240-40	240-40
Id. No.	045299	045297	045297/045298	045298
DCN			170-40/95-50	
Id. No.			33705215	

Oil



Oil for permanent oil bath lubrication

Oil specification	CGLP ISO VG 68
Contents	1 liter/1.05 quart (U.S.)
Id. No.	197859

